



Sampai semua setara



WATER FOR WOMEN

Climate Resilience Inclusive WASH

A group of four children, two girls and two boys, standing outdoors in front of a large tree. They are wearing blue and orange vests with the PLAN logo. The girls are wearing brown hijabs. They are all smiling and looking towards the camera.

Story of Transformation



Sampai Semua Setara



WaterFor
Women

Australian
Aid 

SAHABAT SANITASI

WATER FOR WOMEN
Climate Resilience Inclusive WASH

**Story of
Transformation**

2024



Drafting Team

Writers:

Novika Noerdiyanti
Neky K. Nitbani
Abdul Rohman
Frederika Rambu Awa
Herning Tyas Ekaristi
Annisa Aulia Hanifa

Editors:

Annisa Aulia Hanifa
Silvia Devina
Novika Noerdiyanti

Photographer:

Agusto R.H Domingo Bunga
Antonius Don Bosco Ade Krowa
Abdul Rohman
etc.

Lay outer

Abdul Rohman

Contents

Water for Women Project Profile	6
Project Location	7
Water for Women In Numbers	8
Introduction	10
Greetings from Government Representative	11
Chapter 1. Inclusive and Climate-Resilient WASH Investment.....	12
Strengthening Inclusive and Adaptive WASH Systems to Climate Change	13
IWRM, maintains water for the community	14
Long Struggle to Get to the Water Faucet.....	17
Threat Becomes a Glimmer of Hope.....	19
Moving Together Towards Climate-Resilient Safely Managed Sanitation	22
Achievements of Inclusive and Climate-Resilient WASH Investment	24
Chapter 2. Reducing Climate Risks to WASH Services	25
Increasing Awareness, Reducing Climate Change Risks	26
Creating Climate-Resilient and Inclusive Communities	27
Becoming a Green School, a Climate-Resilient School	29
WASH FIT Encourages Health Centers to be More Inclusive and Adaptive	32
Achievements in Reducing Climate Change Risks	34
Chapter 3. Mainstreaming Gender and Social Inclusion Towards Equality	35
Strengthening the Role of Women’s and Disability Organizations	36
Synergy between PKK and Disabilities for Inclusive and Climate-Resilient WASH	37
Participation of Women’s and Disability Groups for Meaningful Change	39
The Crucial Role of Men in the Struggle for Gender Equality	41
Achievements in Gender Mainstreaming and Inclusion	43
Making Sustainable Change	44
Water for Women Team.....	45



Water for Women Project Profile

Water for Women (WfW) is a programme of Yayasan Plan International Indonesia (Plan Indonesia) funded by the Australian Government's Department of Foreign Affairs and Trade (DFAT) and aims to improve climate resilience, health, gender equality and community well-being through improving inclusive and climate-resilient water, hygiene, and sanitation services. This programme also promotes the active participation of vulnerable groups such as girls, women, and people with disabilities.

In the first phase (2018-2022), the implementation of the WfW Programme successfully encouraged increased access to inclusive sanitation in Sumbawa District, West Nusa Tenggara (NTB), and Manggarai District, East Nusa Tenggara (NTT) through the Gender Equality and Social Inclusion (GESI) STBM (Community-Led Total Sanitation). This success was marked by the declaration of the 5 Pillars of STBM in Sumbawa District and 2 Pillars of STBM in Manggarai District in 2022.

In the second phase (2023-2024) the WfW Programme focuses its programme implementation on 3 things, namely:

1. The Indonesian government and private sector are investing in improving inclusive and climate-resilient water, sanitation, and hygiene (WASH) services.
2. Communities, including vulnerable groups, can reduce the risk of climate change impacts on WASH services.
3. Women, girls, and people with disabilities are the subjects of change in obtaining their rights to WASH services at the household, community, and government levels.

The WfW Programme working area in phase 2 is in 3 districts/cities, namely Manggarai District and Kupang City in NTT and Sumbawa District in NTB with targets of 96 villages, 20 schools, and 20 Health Centres. The WfW programme actively involves women's groups and Disability People Organisations (DPOs) in programme implementation, with the aim of increasing inclusive participation and promoting gender equality.

Project Location

West Nusa Tenggara (NTB) Province

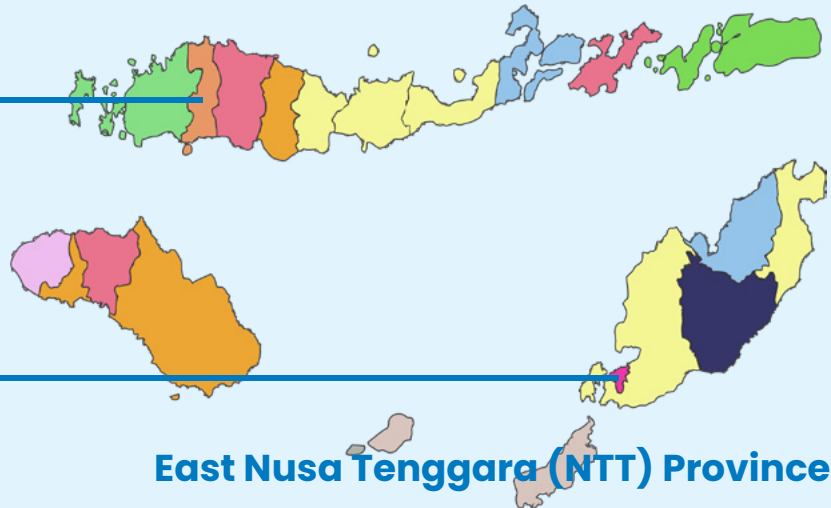


Sumbawa District

32 Villages
8 Schools
8 Health Care

Manggarai District

60 Villages
12 Schools
12 Health Care



Kota Kupang

4 Villages

East Nusa Tenggara (NTT) Province

Partners:

The Family Welfare Empowerment Movement Team (TP PKK) in Sumbawa, Manggarai, Kupang City | PERSANI NTT | Sarea Disability Forum Sumbawa District | Consortium of People With Disability in Manggarai District

Collaborators:

Sumbawa District Government, Manggarai District Government, Kupang City Government | AMPL Working Group in Manggarai and Kupang City, PKP Working Group in Sumbawa District | Regional Drinking Water Company of Kupang City | Kupang City Health Politechnic | Mutiara Timor Waste Bank | Public Health Care Facilities | Sub District and Village Government

Water for Women In Numbers

Implementation Area Data

96 Villages

20 School

20 Healthcare Facilities

Programme participants

5,965 People

2,950 Women

3,015 Men

267 People with Disabilities

463 Children

5,502 Adult

Beneficiaries

246,539 People

40,915 Girls

43,790 Boys

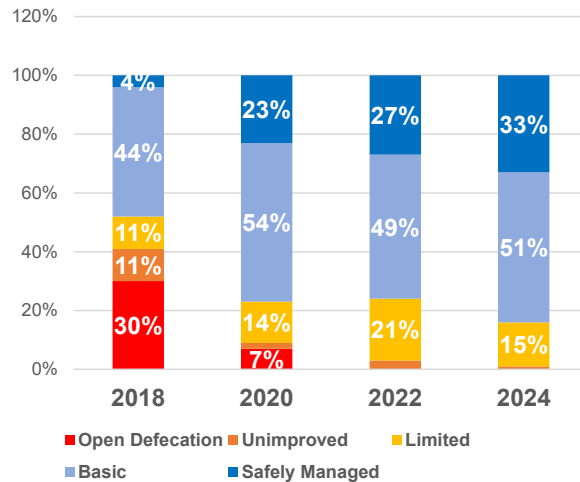
80,959 Women

79,851 Men

44,029 Boys

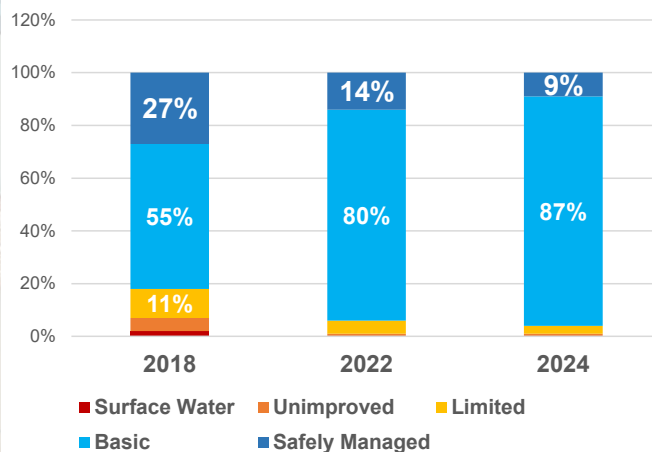
1,024 People with Disabilities

Household Sanitation Access



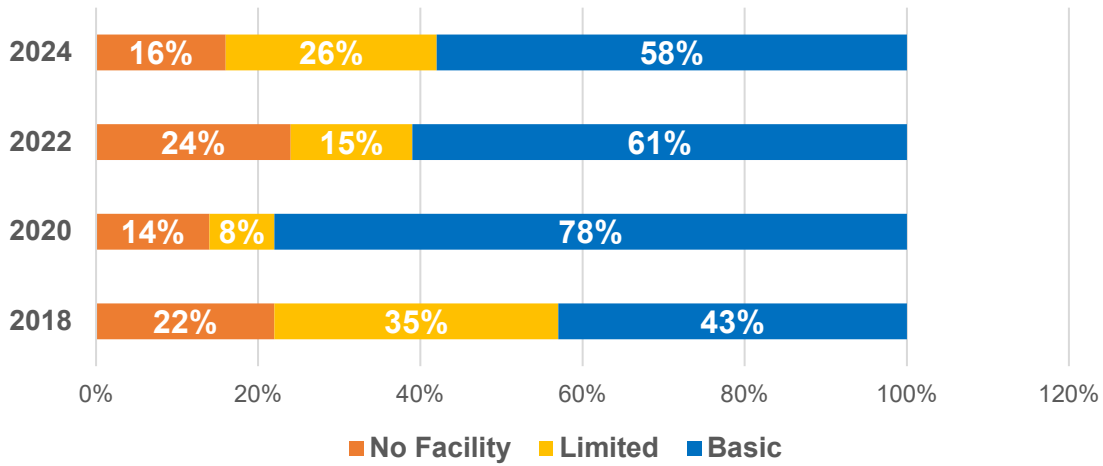
at the end of 2024, WfW increasing the household sanitation access to safely managed to 33% from 5% and decreasing open defecation from 30% to 2%.

Household Drinking Water Access

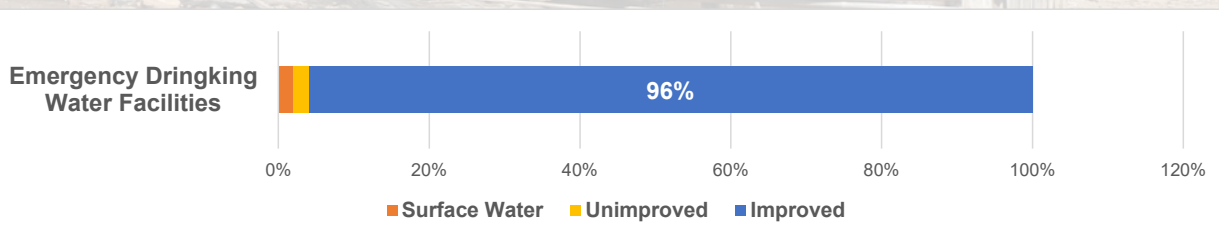
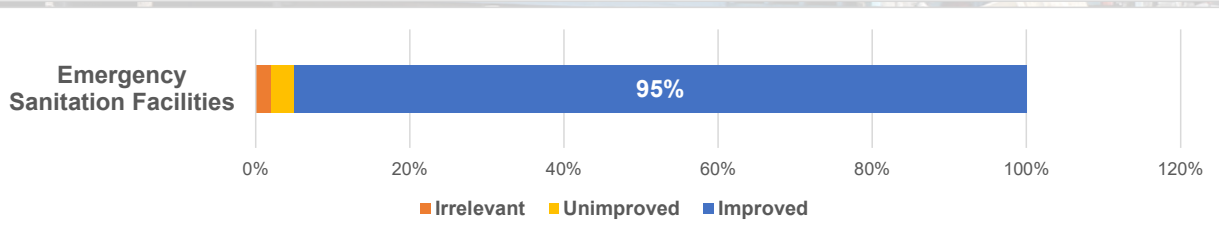
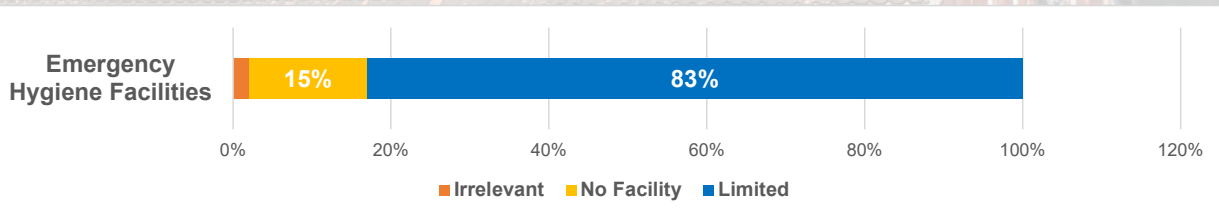


32% increase number for household basic drinking water in 2024 than in 2018.

Household Hygiene Access



WASH and Climate Resilience





Introduction

Climate change threatens water availability and increases the risk of a water crisis. This can have an impact on the agricultural, health and economic sectors. Plan Indonesia through the Water for Women programme exists to address this problem in Sumbawa and Manggarai Districts, and Kupang City since 2023. To provide equal access to water and sanitation for all groups in society, including girls, women, and people with disabilities. For approximately two years, together with local governments, disability organisations, women's organisations, and peer educators, we have all helped each other in our efforts to achieve the target of inclusive and safe water and sanitation for all. Such inspiring and inclusive collaborations keep our work and efforts meaningful.

There are 246,539 people consisting of children, youth, adults, people with disabilities, and the government, who have enjoyed direct and indirect impacts from the results of the Water for Women programme. In addition, sustainability is also a focus of this programme so that the positive impact continues even after the completion of the programme. Therefore, the implementation of safe sanitation, the establishment of the Integrated Water Resources Management (IWM) forum, the triggering of inclusive and climate-resilient GESI CBTS, and the empowerment of vulnerable groups are major steps in the follow-up efforts to mitigate the water and sanitation crisis caused by climate change.

It is remarkable that we have gained various achievements and stories through the implementation of this programme. We would certainly like to thank all partners and colleagues who have been involved in the implementation of the Water for Women programme. We believe that the contributions, energy, enthusiasm, and time we have devoted are never in vain.

Through this Story of Transformation book, we want to share our achievements and stories to become a shared learning and inspiration for the future. We hope that these stories can be a meaningful step for readers and other regions to replicate our good practices.

Happy reading and Salam Sanitasi

Dini Widiastuti
Plan Indonesia Executive Director

Greetings from Government Representative



Ir H Junaidi, M.Si
Head of Bappelitbangda
Sumbawa Regency

The Water for Women programme is implemented by Plan Indonesia together with the Sumbawa District Government and other stakeholders, starting from 2018 – 2022 for phase 1 and 2023 – 2024 for phase 2.

In phase 1, the collaboration focused on the implementation of GESI STBM. As a result, Sumbawa District succeeded in achieving the STBM Regency predicate in 2022.

In phase 2, the WfW programme focuses on the implementation of climate-resilient Inclusive WASH in 32 assisted villages, communities can map climate vulnerability, as well as prepare and implement climate resilient action plans with the potential they have. The same thing is also done in schools and health centres. One of the good lessons in implementing this programme is the involvement of vulnerable groups such as children, women, and people with disabilities.

On behalf of the Sumbawa Regency Government, we greatly appreciate Plan Indonesia and DFAT as donors, especially in completing the SDGs targets, particularly SDGs 5 (Gender Equality), SDGs 6 (Clean Water and Sanitation), and SDGs 13 (Addressing Climate Change).



Robertus Cassidy Bosko, SE., M.Ec.Dev
Acting Head of Bapperida
Manggarai Regency

We really appreciate Plan Indonesia for its synergistic work and partnership with Manggarai District from 2018 to 2024 through the WfW programme. This programme has put the basic foundation for us on how to manage inclusive and climate-resilient water and sanitation services in Manggarai.

The WfW programme has made a major contribution in identifying climate change threats to water and sanitation access in villages, schools, and health centres. There is also assistance in preparing and implementing action plans for activities towards a climate-resilient society.

In another part of the WfW programme, it also facilitated the preparation of SSK (District Sanitation Strategy) in Manggarai District, as well as helping to prepare the stages of implementing safe and sustainable sanitation. In the water sector, Plan Indonesia facilitates the Integrated Water Resource Management Forum (IWM) which has been ratified through the Regent's Decree.

Manggarai District Government is committed to continuing the achievements that have been made during the programme, especially to improve inclusive and climate-resilient water and sanitation access services.



Djidja Kadiwanu, SE., MM
Head of Bappeda
Kupang City

Plan Indonesia has collaborated with the Kupang City Government through the WfW Programme since early 2023. This collaboration focuses on improving the quality of services to the community, especially in access to safe drinking water and separate waste management.

Together with the Kupang City Local Water Supply Utility and related Regional Apparatus Organisations (OPD), Plan Indonesia prepared a Water Security Planning (RPAM) document for the Drinking Water Supply System (SPAM) Kali Dendeng. Through this document, we hope to improve the quality of Standard Operating Procedures (SOP) for safely managed drinking water.

We also received assistance in waste management in 4 pilot villages. There are 4-unit waste banks that have been successfully formed and have established cooperation with the Mutiara Timor waste bank to manage waste in a segregated and economically profitable manner.

Therefore, on behalf of the Kupang City Government, we express our gratitude. The Kupang City Government will replicate the good practices that have been carried out in this programme so that its benefits can be enjoyed more widely.

Chapter 1. Inclusive and Climate-Resilient WASH Investment





Strengthening Inclusive and Adaptive WASH Systems to Climate Change

By: Novika Noerdiyanti

Strengthening Inclusive and Adaptive WASH Systems to Climate Change is an important step towards achieving sustainable development goals. Equal access to water and sanitation not only improves public health, but also supports gender equality and increased welfare in society. Plan Indonesia is committed to facilitating district and city governments to develop comprehensive policies, allocate budgets effectively, and implement WASH programmes that are responsive to the needs of vulnerable groups and able to adapt to the impacts of climate change.

To achieve these goals, the WfW Programme involves the Drinking Water and Environmental Sanitation Working Group (Pokja AMPL) in making adjustments to policies related to water and sanitation services. Namely by including gender and inclusion issues, as well as climate resilience components. In the process of adjusting this policy, the WfW Programme encourages the active participation of women's groups through the Family Welfare Empowerment (PKK) Movement Team, as well as disability people organisations, so that the resulting policies are truly inclusive and climate resilient.

In Sumbawa and Manggarai Districts, the WfW Programme has successfully advocated for Safely Managed Sanitation System policies, Integrated Water Resources Management, and District Sanitation Strategy (SSK) document. Meanwhile, in Kupang City, advocacy was carried out on policies for access to safe drinking water through the preparation of the Water Safety Planning (RPAM) document and strengthening the segregated waste management system managed by villages, in collaboration with waste banks and the Environmental Service.

Through advocacy for these policies, it is expected that it will be able to strengthen the WASH service system that is inclusive and adaptive to climate change, as well as support the achievement of the 6th goal of the Sustainable Development Goals (SDGs) which targets the availability of water and sanitation services for all.



IWRM maintains water for the community

By: Fredrika Rambu

Climate change has an impact on deteriorating water crises that can disrupt the availability of water for all sectors of its users such as for basic household needs, agriculture, industry, and the environmental ecosystem as a whole. In addition, climate change also increases the risk of hydro-meteorological disasters such as droughts, floods, and landslides. Children, women, and person(s) with disability are the most vulnerable groups in this case. Therefore, it is necessary to strengthen coordination and synergy in integrated water resource management from start to finish.

Development of IWRM for sustainable water access

As an effort to improve integrated and sustainable water resources management, Plan Indonesia and the Manggarai and Sumbawa District Governments jointly initiated the establishment of the Integrated Water Resources Management Forum (IWRM Forum). This forum aims to ensure equitable and sustainable access to water by strengthening the synergy of the roles of related stakeholders. Starting from representatives of local governments, academics, the private sector, traditional leaders, religious leaders, women's groups, young people, children, and people with disabilities. Each stakeholder can discuss water management issues holistically and can share roles according to their respective authorities and responsibilities so that programmes related to water resource management become more synchronised, and no longer operate in a sectoral manner.

In the IWRM Forum structure, there are 6 divisions, namely:

1. Water Resources Conservation Division: Responsible for the protection and preservation of water sources.
2. Water Resources Utilisation Division: Managing and optimising the use of water resources for various interests, including for households, agriculture, and industry.



3. Division of Water Damage Control: Preventing and minimising hydro-meteorological disasters.
4. Division of Community Education and Empowerment: Increasing awareness of water conservation and encouraging active community participation in water resources management.
5. Information and Data Systems Division: Manages data and information systems to support integrated water resources management.
6. Division of Policy and Conflict Mediation: Synchronise policies related to water resources management and mediate if there is a conflict caused by water use.

Since its establishment in 2023, Plan Indonesia has facilitated various IWRM Forum activities such as institutional strengthening by conducting training activities, workshops, research, and preparation of work programmes. Then supporting water source conservation activities by planting trees, tidal flood mitigation by planting mangroves in coastal areas, and conflict mediation involving water-using farmers. In collaboration with the Health Centre, water quality testing is also carried out routinely to ensure access to safe drinking water for the community. Through field activities, the IWRM Forum inserts educational materials on the importance of integrated water resource management and encourages active participation from various elements of society.

The IWRM forum is a strategic investment in water resources management at the district level. Stakeholder collaboration in this forum is a key factor in increasing climate resilience and maintaining the availability and quality of water for communities and all water user stakeholders.



Water usage

Supplying water to meet diverse human, industrial, agricultural, and ecosystem needs



Addressing water disasters

Removing, storing, excess water to protect livelihoods, society, and natural ecosystems, from water-related disasters



Building social consensus

Coordinating stakeholder interests for equitable sustainable water resources management

Institutional Strengthening



Institutional strengthening in the PSDAT Forum is carried out as an initial foundation so that this forum can develop in accordance with its objectives.

Springshed Conservation



More than
39,000 trees

have been planted for
springshed conservation
in Sumbawa and
Mangarai



Community Education and Empowerment

The IWRM Forum
visits villages,
providing education
on the importance
of protecting forests
and conserving water
to preserve water
resources.



Disaster Risk Mitigation



450 hectares of coastal land have been
planted with mangroves at a density of 2,500
seedlings per hectare.

Mediasi Konflik



Mediation of water conflicts among farmers who utilize
water from the Mamak Dam, Sumbawa Regency. Any
conflict triggered by water use must be resolved through
local community consensus.

More about IWRM Forum, Check the link below:

IWRM Forum for
Climate Resilience

Mediating Water
Conflict

Long Struggle to Get to the Water Faucet

By: Annisa Aulia Hanifa

Due to climate change, every drop of water is becoming precious. There are only a few water sources that can be used by humans, and it is aggravated by climate change and unequal access. Therefore, Water Safety Planning Manual is one of the major steps in the solution to securing drinking water through a risk management approach, the result of the adoption of the Water Safety Plan (WSP) Manual by the World Health Organisation (WHO).

Cyclone Seroja became a turning point in awareness of improving climate-resilient water services. The first step taken by the Kupang City Local Water Supply Utility (Perumda) was to formulate a Water Safety Planning document which would be a guide for implementing water services in Kupang City. Essential aspect of Water Safety Planning focuses on integration of climate resilience and equity in water safety planning. This ensures that all users, regardless of their socio-economic status, have access to safely managed drinking water, even amid the uncertainties posed by climate change. This is in line with the Sustainable Development Goals (SDGs) that no one should be left behind.

The climate change is inevitable and resulting in some natural disasters in East Nusa Tenggara, such as long drought, floods, landslides, and extreme weather. In April 2021, some areas in East Nusa Tenggara got hit by a tropical cyclone, namely Cyclone Seroja which had impacts not only on infrastructure damage, but also on the clean water issue.

The reduced water volume due to the climate change also affects the children because the water needs are not fully met. Consequently, the area of SPAM (Drinking Water Supply System) Kali Dendeng hit by the landslides as the result of Cyclone Seroja takes further way to look for other water sources, Mrs. Elsy Evelyn Benggu, ST., M.Eng., as the Head of Technical Section Kupang City Local Water Supply Utility said.


**BANGUNANIPA
SPAM
KALIDENDENG
KAP. 150 LPS**

It was recorded that 80% of SPAM found their services affected, resulting in a two-month delay in water supply. This has a huge impact on the daily lives of affected communities, especially after a disaster occurs. This incident is a key point why Water Safety Planning is important for Local Water Supply Utility of Kupang City.

Nationally, the new Water Safety Planning document was created by several Local Water Supply Utility as a form of effort to improve water services. Water Safety Planning is made in order to fulfil the 4K principles in supplying drinking water, such as affordability, continuity, quantity, and quality. In collaboration with Plan Indonesia, Local Water Supply Utility of Kupang City is currently finalising the Water Safety Planning document that is supposed to be the implementation basis and then is given to the government.

Deny Maro, SP., M.Si., Director of Local Water Supply Utility who was met at his office extended his hope that the Water

Safety Planning will encourage the commitment to collaborate with Local Water Supply Utility and other agencies.

“The hope is that water sources can remain available and also collaborate with engineering agencies to increase water discharge,” Deny said.

As a part of the support provided by Plan Indonesia in strengthening the government system, Water for Women operates in Kupang City, including improving the water supply service. For achieving the goal, Plan Indonesia encourages the development of Water Safety Planning by inviting experts in assisting the creation of Water Safety Planning document and water feasibility test. Making the Water Safety Planning will ensure that the plan will be climate-resilient.

Another issue that is the focus of the Water for Women programme in Kupang is that waste management still needs attention. Collaboration between sectors is strengthened by innovations in the integration of contribution payments, one of which is the water service payment of Local Water Supply Utility. This scheme is carried out by one of the four waste banks assisted by the Water for Women programme, namely the Mutiara Timur Waste Bank.

“This plan is still under discussion, but if realised, it could be a solution to the waste problem and facilitate access to water to the taps of the people of Kupang City. Plan Indonesia hopes that this can also be replicated by other waste banks as a good practice in the future,” Novika Noerdiyanti, Project Manager of Water for Women explained.



Water quality testing has become one of the standard operating procedures in ensuring safe drinking water for the community. This testing is conducted at the Water Treatment Plant (WTP) owned by the Regional Drinking Water Company, as well as at the household level by health center sanitarians.

“The reduced water volume due to the climate change also affects the children because the water needs are not fully met”

Elsy Evelyn Benggu, ST., M.Eng

Head of Technical Section Kupang City Local Water Supply Utility





Threat Becomes a Glimmer of Hope

Kupang City Communities Work Together to Manage Waste which is a Threat to Their Health and Safety

By: Annisa Aulia Hanifa

The emergency waste problem has become a threat in Kupang City due to minimal disposal areas and unprocessed waste. The fire that occurred at the Final Disposal Site (TPA) in Alak in July 2024 became a trigger for leaders and decision makers to make changes for the future of their community. Previously, fires at the landfill occurred in 2022 and 2023. This is due to minimal waste management, the active use of an open dumping system, and inadequate infrastructure

Therefore, the people of Kupang City themselves are the ones who are affected by the unpleasant odour, declining soil quality, water pollution, and also the smoke from fires that pollute the air they breathe every day. Therefore, public health and safety are most at stake due to this suboptimal waste management.

The people of Kupang City work together to resolve this problem, starting from the government, disability people organisations, young people, religious communities, development agencies, and others. Plan Indonesia through the WfW programme has contributed to solving the problems of Kupang City since 2023. According to Ani Talan, WfW Provincial Coordinator, the implementation of waste

management must start from household units which can be applied to waste banks.

“We assist four Waste Bank Units in Maulafa, Naioni, Nefonaek, and Oebufu as we assess that these four villages have different and unique characteristics,” added Ani.

One of the assisted waste banks, namely the Naioni Waste Bank, has tried to change the behaviour of its residents to start sorting waste from their respective homes. Naioni residents intend to overcome this worrying waste problem. As a young person who wants to make a change, Yola (19 years old) joined the Naioni Waste Bank after participating in Climate Resilience training conducted by the WfW programme.

“The motivation is related to hygiene is important, initially I did not know that we can make money from managing waste. Now, I can share my experience with my friends, and their awareness has increased,” Yola said.

As the administrative coordinator, Yola has the responsibility to record and ensure the amount of savings of each resident who collects their waste. The conditions are that savings cannot be withdrawn in less than 6 months and all savings

withdrawals must be reported to Sam Amnesi as Head of the Naioni Waste Bank Unit.

Sam explained that there were two most difficult obstacles, namely inviting residents to sort and collect waste because they were still resistant and transporting the collected waste to Maulafa. The problems have been solved one by one.

“We designed a waste bank management scheme that makes our work way more trusted by residents and the transportation is currently assisted by the Environment and Forestry Service (DLHK),” Sam said.

The collection carried out by residents is still quite minimal, making it difficult to transport waste to the Maulafa main waste bank. The Naioni Waste Bank, assisted by advocacy by the WfW team, managed to get support from the DLHK for regular transportation.

Sam and the team also invited people to collect waste by going around using a loudspeaker the day before collection and transportation. This was proven to be effective because there was a significant escalation in the total amount of

waste weighed in January 2024, which was 31 kg, but during March-April it increased to almost 190 kg. This achievement made Sam, Yola, and all the administrators of the Naioni Waste Bank so enthusiastic about inviting residents to do better.

“We hope that with the pilot project waste bank unit, other villages can also replicate the good practices from our assistance, so that they can help solving the waste problem and form a climate-resilient Kupang City community,” Ani said

170 Households in 4 Villages
has Implemented Waste Segregation.
and 11.58 ton waste reduction at
landfill per November 2024.



Waste Management Education



A waste management team is conducting waste sorting education for the community, involving religious leaders and youth

The process of collecting, weighing, and transporting waste at the village waste bank units.



Village Waste Bank Units



Mutiara Timor Waste Bank



Mutiara Timor Waste Bank is led by Meilsi Anita Mansula, a woman who is deeply committed to environmental cleanliness in Kupang City. Meilsi is enthusiastic about collaborating with 4 villages waste bank unit supported by Plan Indonesia and, in partnership with the Kupang City Environmental Agency, aims to expand this unit waste bank system throughout Kupang City.



MOVING TOGETHER TOWARDS CLIMATE- RESILIENT SAFELY MANAGED SANITATION

By: Abdul Rohman

Since 2022, all groups in Manggarai and Sumbawa Districts, including vulnerable groups such as women and people with disabilities, will be able to access 100% of sanitation facilities and practice sanitary behaviour. This success was continued with the implementation of a climate-resilient safely managed sanitation programme by the district government accompanied by Plan Indonesia. This programme seeks to ensure safe management of faecal sludge from storage, transportation, and final processing. The aim is to reduce environmental pollution, especially water sources, due to poorly managed faecal sludge.

Muttakin, ST., M.Si, Secretary of the Public Works and Housing Service of Sumbawa District 2020 - 2024 said, "Polluted water have an impact on the emergence of diseases such as diarrhoea and scabies, as well as malnutrition, especially in pregnant women and children, which can result in stunting. These impacts could be exacerbated by climate change, especially in situations of drought and flooding which increase the risk of outbreaks."

Implementation in Sumbawa District

The safely managed sanitation programme in Sumbawa District has been implemented in stages since 2023. Starting from the institutional aspect, namely the establishment of the Regional Technical Implementation Unit for Domestic Waste Water Treatment (UPTD PALD) through Regent Regulation Number 71 of 2023 which was continued with the preparation of the PALD Standard Operating Procedure (SOP). In terms of policy, a Draft Regional Regulation on Domestic Waste Management was prepared. In 2024, the draft regional regulation is just waiting for ratification by the Regional House of Representatives.

In the infrastructure sector, Sumbawa Regency uses the 2023 Special Allocation Fund for Sanitation amounting to 9.9 billion rupiah to build Faecal Sludge Treatment Plant (FSTP). In the following year, the Special Allocation Fund for Sanitation amounting to 8.7 billion Rupiah, was used for the construction of safe septic tanks for individuals in 9 villages, procurement of a fleet of septic tank suction trucks, as well as supporting activities such as assignments, coordination meetings, and monitoring the progress of safely managed sanitation.

Head of the Public Works and Housing Service of Sumbawa District, Dian Sidharta, ST., MM explained that several sustainability strategies have been designed from the dissemination of the Community Movement Towards Proper, Safe, and Sustainable Sanitation (GAMA SALAMAT), partnerships with the private sector, and development of digital services. "We appreciate the Housing and Settlement Areas Working Group, Plan Indonesia, and all related stakeholders for their collaboration in the safely managed sanitation programme to date. We are hopeful that this collaboration will continue to jointly achieve the target of safely managed sanitation services of 15%," he said. Currently, the coverage of improved sanitation in Sumbawa District has reached 92.1%, including safely managed sanitation coverage of 7.49%.

This signifies that approximately 39,600 residents of Sumbawa have successfully safely managed their septic tanks, thereby preventing the contamination of groundwater in their communities.

Commitment in Manggarai District

Agustinus Kanar, Head of Human Settlements Sector, Department of Public Works and Housing, Manggarai District declares that his region is focuses on improving the quality of safely managed sanitation on an individual scale in 2024. “We have been having healthy toilet and watertight septic tank construction programme since 2021. As of now, there are 3,820 units completely built, he said.

Patris P. Piamat, Head of Infrastructure and Regional Affairs of the Regional Development Planning, Research and Innovation Agency (Bapperida) of Manggarai District, emphasised that starting in 2025, Manggarai Regency Government will prepare supporting documents and land for the construction of FSTP, as well as the establishment of institutions and regulations related to domestic waste treatment.

“In the document of Manggarai District/City Sanitation Strategy, we have included the time line of the implementation stages. We really hope that those stages of implementation will be financially supported by Specific Allocation Fund or The Indonesian Budget” Patris said.

Septic Tank Pumping Service



UPTD PAL-D of Sumbawa Regency provides septic tank pumping services accessible through phone calls, Android applications, or websites.

Safely Managed Sanitation SOP Workshop



The infrastructure for safely managed sanitation needs to be complemented with Standard Operating Procedures (SOPs) as guidelines for utilization and maintenance to ensure sustainability.

Safely Managed Sanitation Study by AMPL Working Group from Manggarai District



AMPL Working Group in Manggarai District conducted a study visit on safely managed sanitation in Mataram City and Central Lombok District to gather materials for developing master plan for safely managed sanitation system.

Achievements of Inclusive and Climate-Resilient WASH Investment

1,197 people have enhanced their capacity in inclusive and climate-resilient WASH.

564 Women

633 Men

304 organizations have enhanced their capacity in inclusive and climate-resilient WASH:

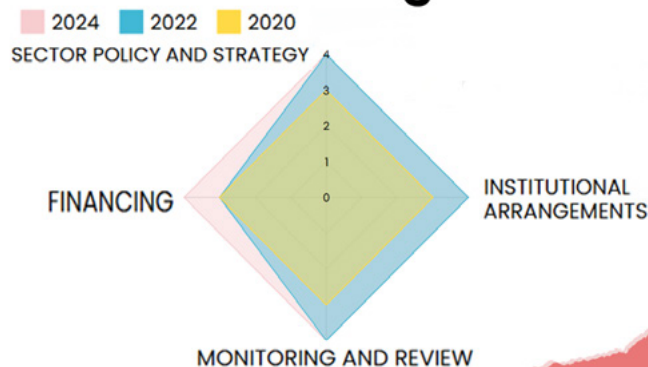
Type of organization	Number
Academics/universities	4
CSO/DPO/RHO	31
Health institutions	44
Basic education institutions	18
Professional organizations	1
Village government	93
District/city government	61
Sub-district government	27
PKK in Villages level	25
PKK in District Level	3
PKK in Sub-District Level	14
Private Sector	8
Religious organisation	4
Grand Total	304

141 local government units have implemented participatory water and sanitation management policies

6 inclusive and climate-resilient water and sanitation policies have been successfully advocated, namely:

No	Policy
1	Kupang City Sanitation Strategy
2	Sumbawa Regency Sanitation Strategy
3	Manggarai Regency Sanitation Strategy
4	Standard Operating Procedure for Safely Managed Sanitation in Manggarai Regency
5	Standard Operating Procedure for Safely Managed Sanitation in Sumbawa Regency
6	Kupang City Regional Action Plan for Climate Change Adaptation

SWA Building Block



The financing sector has made significant contributions over the past 6 years.

CHAPTER 2

Reducing Climate Risks to WASH Services

RENCANA AKSI

RUMAH TANGGA/
KELUARGA

MASYARAKAT

PEMERINTAH

Bekerja Sama dalam menyapu,
memasak, mencuci, dan
menyiram halaman

Perwakilan Kelompok Parubaya

Perwakilan Kelompok Lansia

Increasing Awareness, Reducing Climate Change Risks

By: *Novika Noerdiyanti*



Plan Indonesia in collaboration with the Village and Sub-district CBTS Teams, with the support of the AMPL Working Group, is working to increase the capacity of school residents and village communities in understanding and managing WASH issues affected by climate change. This collaboration aims to enable school residents and village communities to identify climate vulnerabilities in their environment, as well as analyse the potential and develop action plans to respond to these vulnerabilities. In addition, mentoring and monitoring are also carried out, so that villages and schools can implement the action plan effectively, so that they can improve access and quality of inclusive and climate-resilient WASH services.

Plan Indonesia and the University of Technology of Sydney collaborate in developing a guide to inclusive and climate-resilient WASH triggering activities or the Climate Change Response for Inclusive WASH (CCRIW) guide. The guideline conducts participatory and inclusive climate vulnerability risk assessments at the community level. This activity aims to raise awareness of climate risks in 92 villages, as well as guide the preparation of village action plans to respond to these vulnerabilities. The action plans that have been prepared are included in the village development planning document and are supported by village funds. The implementation of

activities from the action plans that have been prepared can encourage villages to improve WASH facilities to be more inclusive and resilient to climate change.

The use of the CCRIW guidelines was also implemented in 20 schools by integrating climate-resilient WASH programmes into UKS (School Health Programmes) activities. The main focus of integration is on access to water, sanitation, and personal hygiene as well as Menstrual Hygiene and Health (MHH). The implementation of this inclusive and climate-resilient WASH action plan utilises School Operational Assistance (BOS) funds as well as self-help funds and cooperation/collaboration with external parties.

In health centres, Plan Indonesia encourages the use of the Water and Sanitation for Health Facility Improvement Tools (WASH FIT) guide. WASH FIT is a tool used to assess and improve the quality of water, sanitation, and hygiene services in health facilities. Through comprehensive indicators, health centres can regularly monitor the condition of WASH facilities and infrastructure and prepare improvement plans. Thus, health centres can ensure that the WASH services provided are more inclusive and adaptive to climate change.



Creating Climate-Resilient and Inclusive Communities

By: Neky Nitbani

The three WfW programme areas, namely Manggarai, Sumbawa and Kupang City, have different altitudes, hence the dissimilar climate. These climate conditions cause the danger of flooding and drought in various regions, exacerbated by climate change and inadequate infrastructure for adaptation.

The CCRIW guide encourages communities to jointly review the climate hazards that have occurred in their respective regions, their impacts on WASH facilities, and the roles of men and women in extreme climate situations. Through CCRIW triggering, communities and local governments jointly assess the climate hazards that often occur in their areas, namely drought and flooding, as well as landslides, and the lack of disability-friendly facilities. The results of CCRIW triggering also show the impact of climate events on WASH, such as slippery and increasingly distant roads to facilities, steep and muddy access, and limited supporting facilities such as ramps, handrails, guide paths and rough floors. This activity generates action plans that are prepared at the village, household, and school levels.

The action plan is then realised in the modification of clean water, sanitation, and hygiene facilities to make them more climate-resilient and accessible. Modifications to clean water facilities that were carried out were adding water reservoirs, collecting rainwater using rainwater gutters, and repairing piping. For sanitation facilities, modifications were made by adding handrails, repairing the upper structure of the toilet, and improving access to the toilet. For hygiene facilities,

modifications were made by adding hand-washing facilities. In addition, modifications were also made to make trash bins that were sturdier and flood-resistant, making infiltration wells, and making gutters or irrigation channels for overflow water channels.

The construction of clean water and sanitation facilities used village funds and existing village self-help as a form of concern from the village government for all its citizens, including citizens with disabilities. The goal is that clean water and sanitation facilities can be used by everyone in any climate conditions.

Tengku Lese Village Government in Manggarai is one of the WfW pilot villages that participated in the CCRIW trigger. Adrianus Sadu, Head of Tengku Lese Village, said that this activity succeeded in making the village government more concerned with its citizens with disabilities. The village government budgeted the construction of toilets equipped with handrails for households with people with disabilities. "It is expected that this assistance can make people with disabilities more independent, so they do not continue to rely on family members when they want to defecate/urinate. "Healthy toilet facilities that are easily accessible, safe and comfortable to use in any weather conditions are very much needed by them," Adrianus said.

Triggering Inclusive and Climate-Resilient WASH



Village Funds Advocacy



Approximately 8.9 billion rupiah of Village Fund in 96-supported villages was allocated to inclusive and climate-resilient WASH action plans. These funds were used for various activities, including the construction/rehabilitation of clean water facilities, the construction of liquid waste disposal systems, the procurement of waste management facilities, the improvement of irrigation canals, the construction of inclusive toilets, spring water conservation, and other related activities.

Implementation of Climate Change Action Plans



Village-level climate change action plans have contributed to improved access to climate-resilient WASH services, reduced vulnerability to climate-related hazards, and fostered increased community awareness of climate change issues.

Becoming a Green School, a Climate Resilient School

By: Abdul Rohman

SD Negeri Batudulang located in the Batulanteh mountain area, Sumbawa Regency, is committed to climate change and environmental conservation issues. Under the leadership of Principal Dwi Ika Setyawati, S.Pd.SD, this school has a vision of becoming a green school, namely a school with an educational concept that leads to awareness and wisdom towards the environment. Not only does the physical appearance of the school look shady and green, but it also has educational activities that encourage school residents to actively preserve nature.

“We were inspired by Plan Indonesia, which has been accompanying us since 2022 for the climate-resilient clean water and sanitation programme. “From this assistance, we have prepared a follow-up activity programme that is directly related to the issue of climate change,” Dwi Ika explained.

School’s Featured Programmes

SD Negeri Batudulang has implemented several innovative programmes, including the mini carbon forest programme, which is a programme to utilise empty land behind the school to plant trees as an educational medium so that children are aware of protecting trees and forests in their environment.

The next is the waste sorting and compost production programme. Dila (12 years old), a student who is a peer educator, explained that children are accustomed to sorting organic and non-organic waste. “After sorting the waste, we are also trained to make compost. This fertiliser is used to fertilise plants at school,” Dila explained.

There is also a drinking water treatment programme using a water filter. According to Yulia (10 years old), one of the students at this school, she and her friends are very happy because they can refill the drinking water bottles that they usually bring. “We no longer need to buy drinking water at the stall so we can reduce plastic waste,” she said.

Several other programmes that are still in the planning stage are the maggot production programme, vegetable gardens, and fish ponds. This programme aims to develop the concept of integrated organic waste management with the use of compost for gardens and maggot production for fish feed.

Dwi Ika explained that in implementing these programmes, SD Negeri Batudulang collaborates with related agencies, health



centres, and the School Committee. This collaboration is not only in the form of financial support, but also assistance in the form of plant seeds, manpower for mutual cooperation, and educational training for students and school staff.

According to Dwi Ika, the vision of this green school has a significant impact on children’s character education. “We integrate this programme with P5 (Project for strengthening the profile of Pancasila students) learning in the independent learning curriculum. Therefore, children may grow in characters and care about the environment, do not litter, and protect the environment around them,” she said.

Water for Women Programme Support

SD Negeri Batudulang is one of 20 schools that received assistance from the Water for Women programme, Plan Indonesia and has reached 5,295 students, comprising 2,616 girls and 2,679 boys. Each school has a different climate resilience action plan based on the climate vulnerability in their area. The action plan is part of the results of the climate-resilient WASH triggering activity facilitated by health centre sanitarians. This climate-resilient WASH triggering uses a guideline developed by the Water for Women Programme, in collaboration with the Institute for Sustainable Futures, University of Technology Sydney (ISF-UTS). The Water for Women Programme provides training to mentor teachers, peer educators and health centre sanitarians, so that they can use the guideline to design school programme in response to climate change.

Farida, a Sanitarian of Lape Health Centre, said that the climate-resilient WASH triggering guideline is very helpful for facilitators and triggering participants to map problems related to climate change issues, map their potentials, and create action plans to respond to vulnerabilities due to climate change. According to her, this guideline can be replicated in other schools so that they can become climate-resilient green schools.

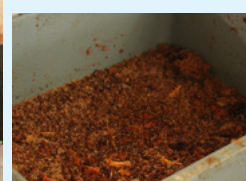
Ozone Mini Forest



Drinking Water with Water Filters



Compost and Maggot Fertilizer Processing



The Green School School innovations from Dwi Ika at SDN Batu Dulang have earned her the title of First Place for Innovative Headmistress at the Provincial Level in NTB in 2024.



Triggering Inclusive and Climate-Resilient WASH in Schools



The Role of Peer Educators



80 peer educators were equipped with the knowledge and skills to educate their peers about the impacts of climate change. Leveraging a variety of educational tools, including comics, flipbooks, and games, they successfully disseminated climate change information. Moreover, some educators developed their own original teaching materials.



WASH in School Improved Facilities



The school ensures the availability of daily water supply, rehabilitates toilets and handwashing facilities to be more inclusive, and provides menstrual hygiene kits for girls.



WASH FIT

Encourages Health Centers to be More Inclusive and Adaptive

By: Abdul Rohman dan Novika Noerdiyanti

WASH FIT or Water and Sanitation for Health Facility Improvement Tools is a comprehensive monitoring tool in identifying problems and improving services related to water, sanitation, and hygiene, as well as accessibility of facilities in health facilities. There are 6 indicators assessed in the WASH FIT monitoring form, namely clean water facilities, sanitation, medical waste management, hand hygiene, environmental hygiene, energy and environment, and management and workforce. These indicators help health centres in identifying vulnerabilities due to climate change, as well as make plans to improve infrastructure and utilise appropriate technology to respond to these vulnerabilities.

In Indonesia, WASH FIT has been integrated into the Medical Waste Management Information System. This integration is a commitment of the Ministry of Health in an effort to improve WASH facilities to create a clean and healthy health centre environment to support inclusive health services.

Plan Indonesia supports this commitment by directly assisting the WASH FIT monitoring process. From 20 health centres involved in the first year, the number has increased to 44 health centres in the following year (26 health centres in Sumbawa and 18 health centres in Manggarai). This indicates

a growing awareness and commitment to enhancing the quality of WASH services in healthcare facilities, which serve approximately 427,000 patient annually.

Serafia Saninda Genok, Head of Puskesmas Reo, Reok Sub-district, Manggarai District said, "We are very grateful to Plan Indonesia since we are greatly motivated to become an inclusive health centre. Some of the facilities we made, such as the handrail at the front, and in the toilet, are simple things for us. After being monitored by Manggarai Disability Consortium, they found it extraordinary". Serafia also confirmed the plan to install handrails along the corridor leading to the polyclinic at the health centre. The plan has been included in the proposed budget for 2025.

At Puskesmas Lape in Sumbawa District, Farida, a Sanitarian, said that one of the follow-ups to WASH FIT is maintaining the availability of clean water at the health centre. "The need for clean water at the health centre is not sufficient if we rely on water from PDAM. Therefore, we took the initiative to build a drilled well equipped with a water tank. Praise God, currently the need for water for patients, toilets, bathrooms, hand washing places, and for washing medical equipment can be met," she explained.

Involvement of Disability Organisations

To monitor the implementation of the follow-up plan in each health centre, Plan Indonesia and the Health Service formed a monitoring team involving disability organisations. According to Ignatius M. Hurint A.md, Head of Puskesmas Nanu, Manggarai District, said that disability organisations are very helpful in providing recommendations for accessible facilities. “The involvement of people with disabilities in the WASH FIT monitoring team has really helped us in making accessibility plans to ensure that our health centres can be accessed by everyone without exception,” he explained.

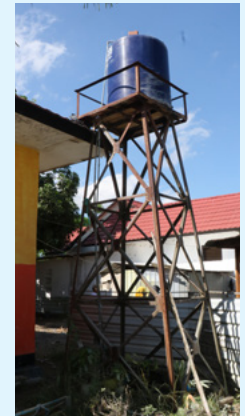
Sabinus, Chairman of the Manggarai Disability Consortium, said something similar. “I am happy to be involved in the

WASH FIT Monitoring team, to ensure that all health centres can be accessed by everyone, including the disabled, the elderly and pregnant women. Health centres and other public facilities should provide services and infrastructure that are friendly to everyone,” he said.

The Head of the Sumbawa District Health Service, Junaedi, M.Sc., Apt emphasised, “The problem of water, sanitation and hygiene is the most basic need to realise quality health service. Praise be to God, in 2024, all health centres (26 health centres) in Sumbawa District have conducted a WASH FIT assessment. We will follow up on the results of the WASH FIT recommendations through existing budget sources,” he explained.

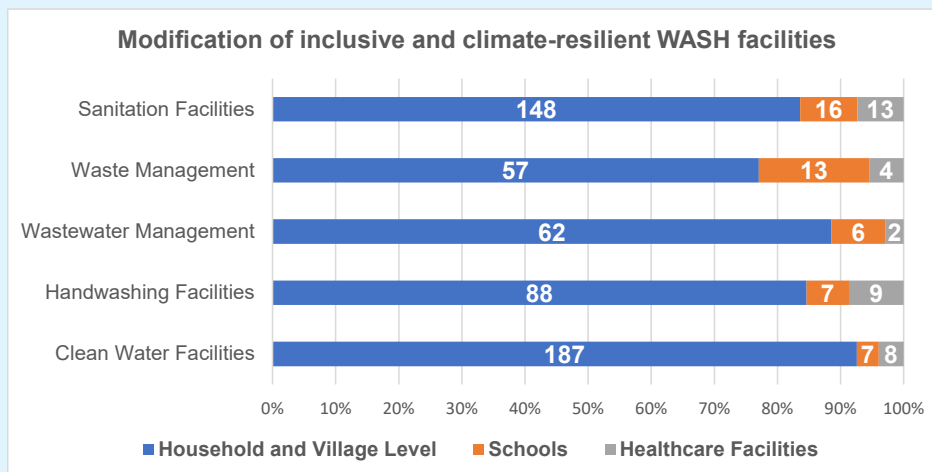
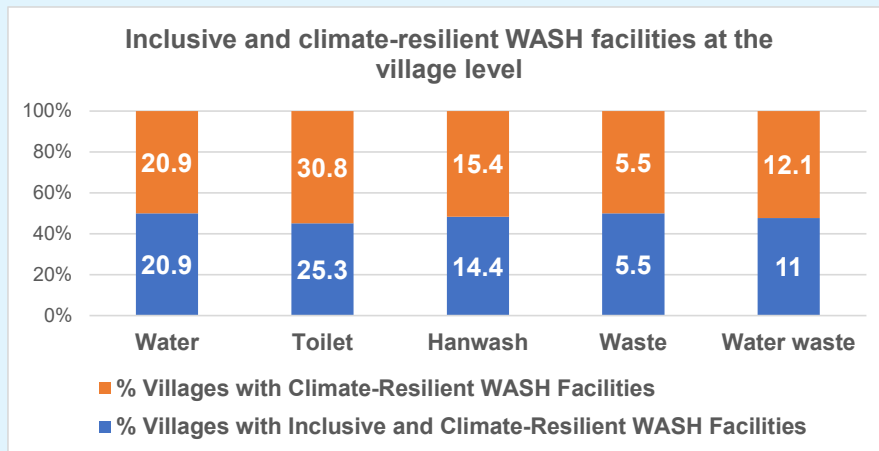
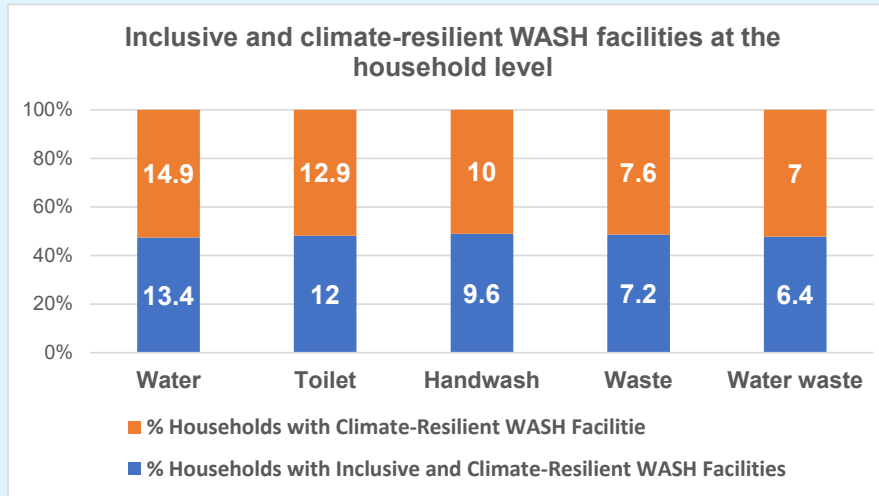
“We are very grateful to Plan Indonesia since we are greatly motivated to become an inclusive health centre”

Serafia Saninda Genok - Head of Puskesmas Reo



A series of WASH FIT activities, ranging from capacity building for health center staff, WASH FIT assessment, to the implementation of assessment recommendations for the development of health center infrastructure.

Achievements in Reducing Climate Change Risks



CHAPTER 3

Mainstreaming Gender and Social Inclusion Towards Equality





Strengthening the Role of Women's and Disability People Organizations

By: *Novika Noerdiyanti*

The Water for Women programme has empowered groups of women, girls, people with disabilities, and other marginalised groups to actively participate in decision-making processes at the household, community, and institutional levels. The programme actively seeks to create new awareness regarding gender equality in decision-making, and responsibilities related to WASH at the institutional, community, and household levels. By involving various groups in society, this programme aims to ensure that there is increased inclusive participation, so that decision-making and the division of roles taken can accommodate the needs and perspectives of all parties.

In the three assisted areas, Plan Indonesia has increased the capacity of PKK and Disability People Organisations (DPO) related to climate-resilient WASH and has internalised it into their work programmes. In addition, PKK and DPO also actively participate in forums related to WASH and climate change so that they can extend their concerns regarding climate-resilient WASH in WASH forums including Working Group, STBM teams, IWRM forum, and other climate change forums at the district level and are actively involved in the process of formulating climate-resilient WASH policies, developing IWRM forum action plans, and planning drinking water and sanitation services and preparing the Regional Action Plan for Climate Change Adaptation for Kupang City.

Plan Indonesia has worked with sub-district and village STBM teams in implementing GWMT (Gender Equality Monitoring in STBM) as a medium to reflect on gender and social inclusion in the water and sanitation sector in

Manggarai and Sumbawa districts facilitated by PKK in the process. Plan Indonesia has also worked with DPO partners (Persani/Christian Disability Organisation) in implementing the Participatory Action Research (PAR) process in Kupang City in implementing advocacy activities led by marginalised groups at the community level, focusing on rights to climate-resilient WASH services and improving public WASH facilities.

Simultaneously, Plan Indonesia has also carried out awareness-raising activities aimed at groups and individuals who shape and maintain norms in creating an inclusive environment and considering GESI at the community level. Through collaboration with men, boys, youth, and community leaders, it is expected that they will be able to change their mindsets and support the implementation of GESI principles so that there is broader support that all individuals, regardless of background, can participate in decision-making and have equal access to resources.

Empowering women's organizations and Disability People Organizations has had a profound impact on society. These groups have become increasingly vocal in advocating for their rights and aspirations. They are now active participants in discussions and deliberations at all levels, from the village to the district. Notably, the district government has organized special thematic development planning consultations specifically for people with disabilities. This demonstrates the program's success in enhancing the capacities of both individual women and people with disabilities, as well as their respective organizations.



Synergy between PKK and Disabilities for Climate Resilient and Inclusive WASH

By: Herning Tyas Ekaristi

“The issue of climate-resilient WASH is important because climate change is real, so we need to take real action to prevent the impacts of climate change from now on. And we are aware that we will be the group most affected by this,” said Sabinus Ngadu, Chairman of the Manggarai District Disability Consortium. Climate change is a global challenge that affects various aspects of life, including health, economy, and community welfare.

Responding to this global issue, Plan Indonesia through the Water for Women Programme has implemented climate-resilient and Inclusive WASH with GESI STBM (Community-Led Total Sanitation) approach which is designed not only to increase access to proper sanitation, but also to ensure inclusivity and gender equality. Furthermore, Plan Indonesia has partnered with PKK, as women’s organization, and also Disability People Organizations.

Synchronisation of Work Programmes is Fruitful.

Family Welfare Empowerment (PKK) is an organisation that plays an important role in improving the quality of life of the community, especially in terms of family health and welfare. PKK educates the community about the importance

of sanitation and hygiene and encourages active community participation in it.

“We are adjusting the PKK work programmes to be more protective of the environment, integration with the Environmental Service for tree planting and cooperation with the Regional Disaster Management Agency (BPBD) as part of increasing community resilience to face climate change,” Sari Dewi, deputy chair of Working Group 4 of the Sumbawa Regency PKK Team said. Not only PKK, the Sumbawa District Sarea Disability Forum also has a work programme that contributes to climate resilience, they even celebrated International Day of Persons with Disabilities by planting 1,500 tree seedlings.

The same thing happened to the PKK and Disability People Organisations in Manggarai District and Kupang City. Some things that are real actions, namely disseminating climate-resilient GESI STBM, making bokashi fertiliser for tree planting, sorting waste, using reusable sanitary napkins and others.

In the context of GESI STBM, PKK also ensures that the sanitation programmes developed notice the aspects of

“Plan Indonesia is able to build a situation where we (people with disabilities), society and the government are equal”

Sabinus - Coordinator of Consortium People with Disability Manggarai District

gender equality and social inclusion. “PKK and people with disabilities in villages and village government collaborate in the waste management team. We conduct dissemination activity regarding waste sorting and invite the community to weigh waste at the village waste bank unit,” Herlina Johanis, Head of PKK, Nefonaek Village, Kupang City, added.

Positively Impactful Oneself and Others

Synchronisation of work programmes between PKK and Disability People Organisation is the key to success in realising GESI STBM that is climate resilient. Certainly, if there is good collaboration, it will certainly have a positive impact on oneself, others and the environment on a wider scale.

“Plan’s intervention helped us achieve the declaration of 1st and 2nd Pillars of STBM. Most of the community already

understands that environmental hygiene is important and requires support from all parties,” Margaretha Rineldis Beat, Head of Working Group 4 of the PKK Manggarai Regency Team said.

Meanwhile, Sari Dewi added about positive changes in herself and her colleagues, namely more discipline and increased self-confidence and involvement in every regional development forum. She is committed to continuing to involve people with disabilities in every PKK programme to ensure that the generated STBM programme is not only sustainable, but also inclusive, meets the needs of all levels of society, and is able to adapt to the challenges of climate change.

Impactful and Sustainable

The synergy between PKK and Disability People Organisation in implementing GESI STBM that is climate resilient is an important step in creating a more inclusive and resilient society. This collaboration indirectly makes the community aware that no one should be left behind in development. “Plan Indonesia is able to build a situation where we (people with disabilities), society and the government are equal,” said Sabinus. Thus, a more inclusive and sustainable environment is created for all.





Participation of Women and Disability Groups for Meaningful Change

By: *Herning Tyas Ekaristi*

In some places, women and disability groups still tend to be forgotten and are not taken into account in a community. Plan Indonesia, through the Water for Women Programme, initiated the involvement of women and disability groups in Manggarai District and Kupang City in Participatory Action Research (PAR).

PAR is an approach that involves active community participation in simple research and action planning to bring about significant change. In the context of climate-resilient waste management and GESI CBTS, PAR plays a critical role in empowering women and people with disabilities as agents of change.

Achieving Climate Resilience through Active Participation

“Because of this PAR, I realised that environmental hygiene and waste management are still major problems,” Eufrasia Danul, a housewife from Manggarai District, who is also a PAR member, said. Eufrasia never imagined that she would be able to meet and advocate to the relevant government because she is just an ordinary housewife who is rarely involved in public activities. In one of her action plans with other PAR participants, Eufrasia committed to bringing her own shopping bag when shopping. Small things which have a big impact.

The PAR activities carried out in 2019 have also increased the understanding of Aloisia D. P. Kung—a woman with disabilities—about knowledge related to sanitation and climate change, how to become a facilitator, how to plan activities, establish relationships with stakeholders, and conduct advocacy. Some of the action plans carried out are conducting advocacy to related parties, dissemination of information on waste management, and making campaign posters. In addition to the issue of waste management, Aloisia added that a point that was also initiated through this PAR was the availability of accessible public facilities, especially sanitation facilities.

Inclusive Collaboration in Waste Management and CBTS

Through the PAR approach implemented in Kupang City in 2023, people with disabilities can also be actively involved in designing and implementing inclusive solutions that truly reflect the needs of the entire community.

“I am so thrilled to be involved in PAR since I have gained a lot of new knowledge, and I am more confident in speaking in public. It is due to the fact that I had never been involved in community activities,” Sriyanti, a woman with disabilities from Nefonaek Village, Kupang City, said. In collaboration with the Christian Disability Organisation (PERSANI), Sriyanti and

PAR participants from 4 villages explored the problem and prepared a joint action plan.

Some of these action plans include dissemination of information on disabilities and waste sorting at the Neighbourhood Unit, village, and school levels, carrying out tree planting activity, meeting and advocating with related agencies such as the Regional Development Planning Agency (Bappeda), the Environmental Service, and others. Until now, Sriyanti admitted that she has been involved by the village government in several official government meetings and has actively served as the village disability coordinator and waste management administration coordinator in her village.

Synergy in Supporting Climate Resilient GESI CBTS

From PAR advocacy, the government and society are more open in accepting groups with disabilities. Currently, the government is more motivated and focused on waste management and environmental hygiene. Regarding inclusion facilities, there are already sloping fields or ramps, handrails in several public facilities that make it easier for people with disabilities to access them. Indeed, not all of them, but this is a good step that is expected to be taken by other parties.

The PAR approach allows women and people with disabilities to be part of the solution in facing the challenges of climate change. By involving these groups, the programme designed is not only more inclusive but also more adaptive to local conditions, which ultimately increases the climate resilience of the community.



Through PAR activities, women and people with disabilities actively participate in developing plans, implementing programs, and evaluating climate change adaptation activities.





The Crucial Role of Men in The Struggle for Gender Equality

By: *Herning Tyas Ekaristi*

where all household chores are done by women. If there are men who cook, wash clothes, take care of children, then it is considered as a disgrace to the family," Ayeb Ariansyah, a man who has been a GWMT facilitator from Sumbawa District since 2020, said.

Ayeb said that at the beginning of GWMT, many male participants said that it was a disgrace if men had to help their wives in cooking or doing the laundry because they thought that it was an insult to their dignity. However, after participating in several dissemination activities, most of the community began to understand the importance of men in understanding gender equality because it would lighten the burden on women and bring about harmony in the family.

The same thing was also expressed by the GWMT facilitator from Manggarai District, Margaretha Rineldis Beat, who is the head of Working Group 4 of the PKK Movement Team. "We provide education related to gender equality and the changes are visible during GWMT, where people have begun to understand gender equality, especially the division of workload in the household. In addition, women have also been involved in community activities and are confident in becoming leaders at the Neighbourhood Unit level, sub-village heads, Posyandu cadres, spiritual group leaders, and others," Margaretha said.

Role Model of Gender Equality in Schools

Just like adult males, boys also play an important role in supporting gender equality. This approach is taken by believing that it will be more effective when a child speaks to peers of the same age because they are so much better in communicating in their own way supported by the unique experiences they have gained.

MHH is indeed new to children in schools. The paternalistic culture of Manggarai makes menstruation still taboo to talk about. However, through GESI CBTS, children learn what menstruation is, how long the menstrual cycle is, how to put on sanitary napkins, and how to respect female friends who are menstruating and even help preparing water in the

Gender equality is not just about providing equal opportunities, but also about creating an inclusive environment where everyone can thrive without being limited by traditional gender roles.

Men's involvement is important because it can help challenge and break down harmful gender stereotypes. When men start sharing responsibilities with women, it not only lightens women's burdens but also shows that gender equality can bring benefits to everyone.

This gap is the focus of Plan Indonesia through the Water for Women Programme to improve gender equality. Through capacity building for men related to gender equality monitored through the Gender WASH Monitoring Tool (GWMT) and for boys through peer educators who can talk about Community-Based Total Sanitation (CBTS) and Menstrual Hygiene and Health (MHH) to their peers.

Being Allies in Households

It is not easy when someone has to move out of their comfort zone. "One of the challenges is the paternalistic culture,

toilet so that it becomes a new understanding for children to create a friendly space for anyone who menstruates.

“I am not ashamed to disseminate the information regarding MHH since this is a normal thing and needs to be known by everyone so that they can support those who are menstruating,” Vito, one of the peer educators at one of the SLB (Special Need Schools for Children with Disabilities) in the Manggarai District, said. He advises his male friends not to bully their friends who are menstruating. He also expects that his female friends will not be embarrassed, but will still go to school when they are menstruating because the school prepares some spare sanitary napkins.

Positive Impacts of Men’s Involvement

Men’s involvement in supporting women is essential to achieving gender equality because men can help create positive social change. Gender equality is not the responsibility of one gender alone, but a collective effort that requires the participation of all parties. By working together, we can create a more inclusive and equal world for everyone.

GWMT



GWMT, promotes gender equality between men and women within families and communities.

Boys Care About Menstruation



Boys no longer bully girls but instead help those experiencing menstrual difficulties.

Fathers Who Care About Breastfeeding



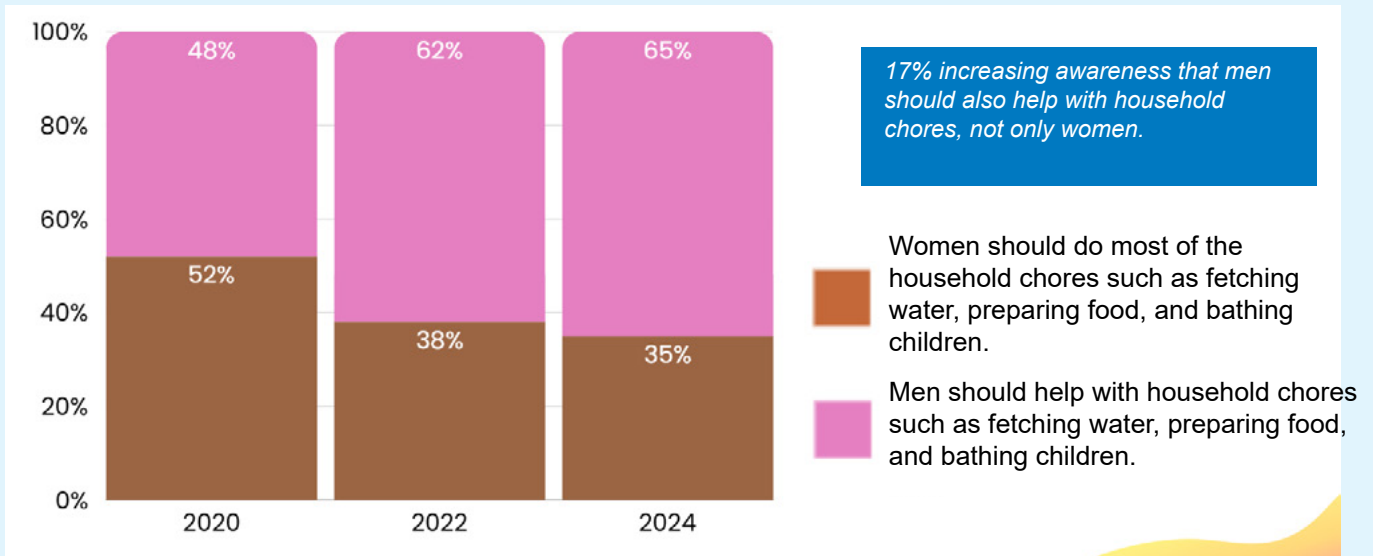
Training for fathers to actively participate in childcare.

Equality in the Family

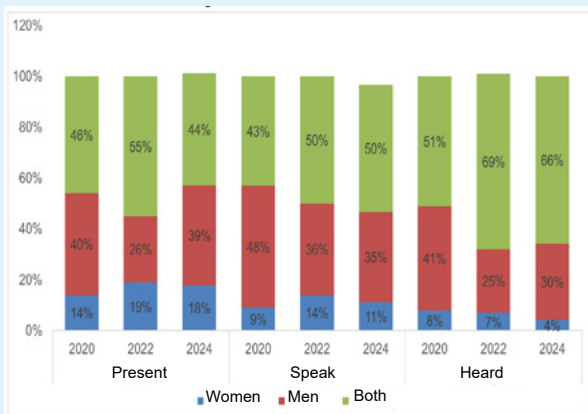


Achievements in Gender Mainstreaming and Inclusion

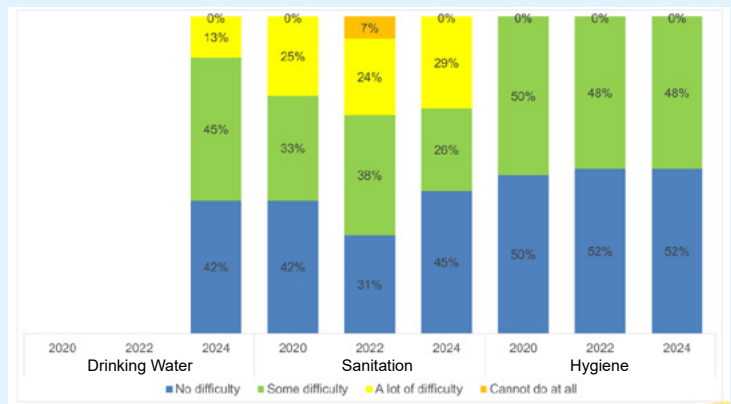
Perception of Household Work



Participation in Community-Based Total Sanitation



Access to WASH Services for People with Disabilities



The access to WASH services such as drinking water, sanitation, and hygiene is less difficult to people with disabilities.

Making Sustainable Change

By: Novika Noerdiyanti



The signing of a commitment for the continued implementation of inclusive and climate-resilient water and sanitation programs by the Regent of Sumbawa. Similar commitments have also been made in other implementation areas.

Working with local stakeholders (Village CBTS Team and AMPL/PPAS Working Groups in the District) from the beginning of the Water for Women programme, implementing capacity building, issue assessments and planning document and policy advocacy. And it is expected that several policies such as District Sanitation Strategy, Kupang City Water Safety Planning Document, IWRM Forum Initiation, RAD API (Regional Action Plan for Climate Change Adaptation) by integrating WASH issues, PKK and Disability People Organisations Work Programmes that have integrated climate change issues, have been initiated together to support climate-resilient and gender equality and social inclusion in WASH system.

Involving Everyone Without Leaving Anyone Behind

The Water for Women programme has been working not only on climate-resilient WASH, but also on promoting gender equality and involving everyone with the principle of “No One Left Behind”. This is critical as it ensures inclusivity and equity for all levels of society, especially vulnerable groups such as people with disabilities, women, children, and minority groups in climate-resilient Water and Sanitation programmes. This approach helps identifying different needs and ensures that the benefits of the programme are enjoyed by everyone, without exception.

Inclusive programmes also generate more equitable and effective solutions, as diverse perspectives and experiences are taken into account in planning and implementation. Ultimately, this helps to create a more equal and cohesive

society, where everyone has an equal opportunity to thrive. Thus, ensuring the availability of disaggregated data, including data on people with disabilities, involving all vulnerable groups in the programme cycle is essential to continue.

Working Together in Forums and Consortia

Working in forums is important because it allows for collaboration, exchange of ideas, and learning between parties with similar interests or goals. It also strengthens coordination among organisations or groups, increasing efficiency and reducing duplication of efforts. Forums also allow for joint advocacy, where a collective notion is stronger in influencing policy or rallying support. And by working together with rights-based organisations, such as Disability Organisations and Women’s Organisations as well as Religious Organisations, Academics Institution can strengthen the issue of more inclusive climate-resilient WASH.

During the programme period, Plan Indonesia encourages the initiation and strengthening of forums consisting of several different backgrounds and expertise that are expected to be able to respond to issues related to water and sanitation, as well as gender equality and climate. The expectation is that existing forums can be continued and strengthened to facilitate communication and provide a wider impact, especially to resolve problems within the Regency/City or to take other opportunities externally

Tim Water for Women



Novika Noerdiyanti
Water for Women
Project Manager



Neky Nitbani
Monitoring and
Evaluation Coordinator



Herning Tyas Ekaristi
GESI Specialist



Fredrika Rambu
Climate Change
Specialist



Ireni Susilawati
Finance Officer NTT



Juliani Talan
Provincial Coordinator
NTT



Yohanes Emanuel Lele
Field Supervisor
Manggarai



Lot Piter Palaipeni
Field Officer
Manggarai



Yulius Avellino Kevin Mahu
Field Officer
Manggarai



Andreas B. Wotan
Field Officer
Kupang



Jatmoko
Provincial Coordinator
NTB



Astri Wulandari
Field Officer Sumbawa



Irwansyah
Field Officer Sumbawa



Rohana Hasmi
Finance Officer NTB







SCAN ME

YAYASAN PLAN INTERNATIONAL INDONESIA

Komplek Buncit Utama Kav.16. Jl. Warung Jati Barat RT.001/ RW.005 Kel. Jati Padang, Kec. Pasar Minggu Jakarta Selatan 12540, Indonesia

plan-international.or.id    @planindonesia

 Plan Indonesia Official